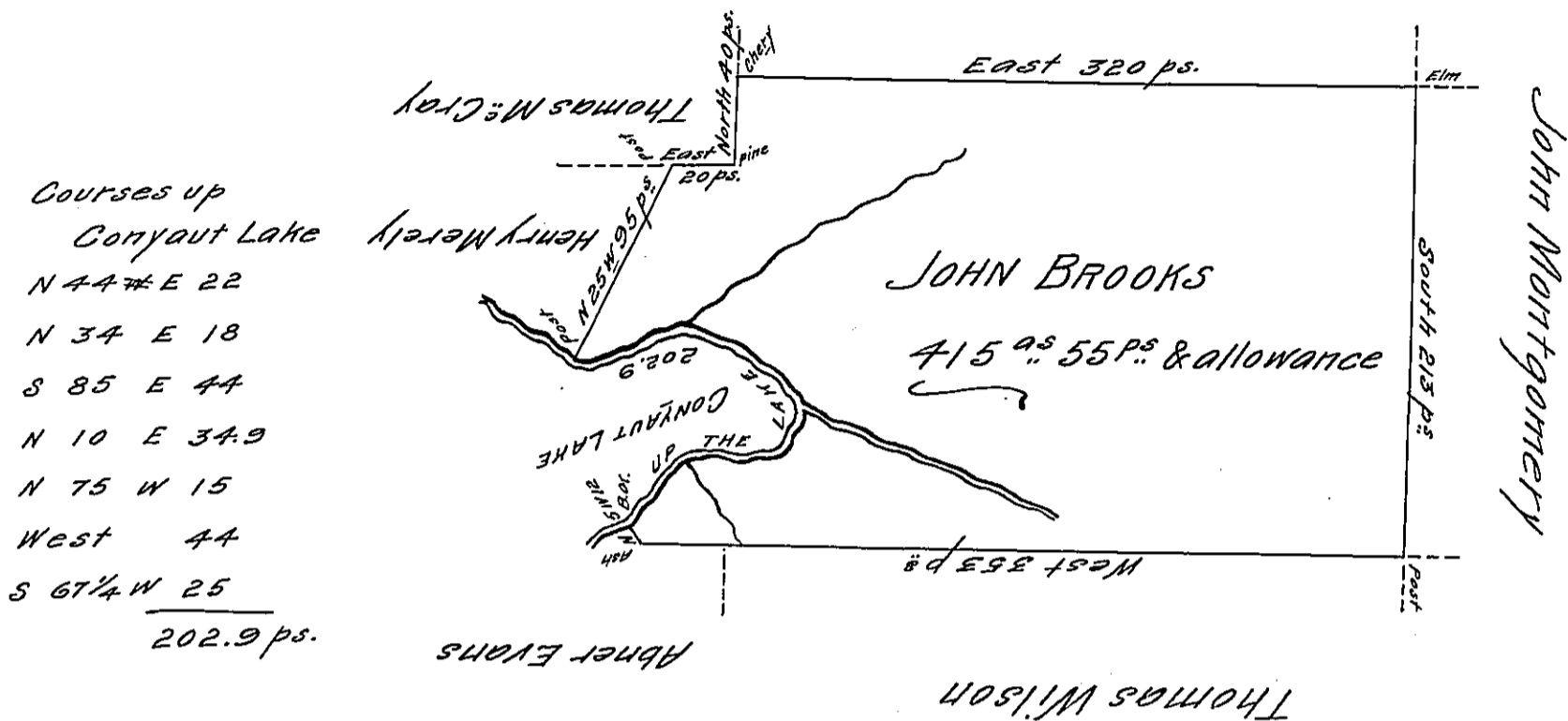


Lewis Potter



Situate on the West side of French Creek in ALLY County Containing 415 ac 55 ps and allowance of Six p. Cent for Roads &c. Surveyed the 9th day of November 1794 In pursuance of his Improvement Bearing date the 15th day of June 1794

W^m Power D^x Sr.

To Dan^l. Brodhead Esq^t.
 Surveyor General

IN TESTIMONY that the above is a copy of the original remaining on file in the Department of Internal Affairs of Pennsylvania, made conformably to an Act of Assembly approved the 16th day of February, 1833, I have hereunto set my Hand and caused the Seal of said Department to be affixed at Harrisburg, this seventeenth day of April 1906

Geo. C. Brown
 Secretary of Internal Affairs.